



Goodrich Global  
SINCE 1983

---

[ ***T*** ] **TAKUMI**  
TAKUMI Artisan Crafted Wallcoverings

---

sangetsu | goodrich



# A COLLABORATION STORY

Takumi, a Japanese word meaning artisan, is the essence of this stunning collection. As a Sangetsu Group collaboration, this book brings crafted pieces of art to the wall.

Natural materials, along with centuries of knowledge passed down from the ages, make this selection of wallcovering patterns unique and timeless. Foils are applied by hand, in small pieces, to create geometric forms that are one-of-a-kind. Washi papers are derived from pulp that still begin and end with the artisan's hand. Weavers combine old, traditional weaving methods with new technology to make intricate, complex woven patterns.

While exploring the collection, connect with the stories of these time-honored traditions – they reveal how the product is made and the processes passed down through generations to create patterns for the market today.

## TAKUMI™

Artisan Crafted Wallcoverings

CRAFTED BY:

*A Story | Generations | Authenticity | The Heart of an Artisan  
Inspiration | The Stroke of a Brush | Brilliance | Collaboration*

CRAFTED FOR YOU

*Enjoy the journey.*









# FOIL STORY

The method of producing gold leaf is universal, having remained essentially unchanged over thousands of years. The key differences are in the materials used, the beating process, and the number of times the gold is beaten. The base material for these products is mainly washi paper. The process of hand stamping on washi paper is very delicate and requires a high level of skill, patience, and concentration.

Takumi features a range of foils from platinum and gold leaf to silver foil and silver foil discolored by firing it with sulfur. Various types of foils such as brass, aluminum, and tin foil are also used.

The standard design of gold leaf is called Hiraoshi, which is an orderly arrangement of square foil. There are other types as well, such as Kokuzu-furi, Momi, Ohbaku-Chirashi, and Obi. Kokuzu-furi is made by spreading fine foil flakes evenly over the washi paper. Momi is crafted by placing gold and silver paper by hand to create an uneven design. Stamping foil at random creates Ohbaku-Chirashi and Obi is fabric folded in a zigzag pattern and stamped with foil on top.

Foil's presence and elegance make it a favorite choice in high-end luxury interior spaces around the world.

*See the pride in craftsmanship shine through.*









## EXQUISITE FOILS



TAK-AA01-01



TAK-AA01-02







**TAK-AA01-01  
SPECIFICATIONS**

**Content:** Tin  
**Backing:** Paper  
**Width (approx):** 92 cm. (36.2 in.)  
**Roll Size (approx):** 7.4 m. (8.1 yd.)  
**Sold by the Roll**  
**Minimum Order Quantity:** 1 Roll  
**Installation:** Approximate Match  
**Vertical Repeat:** N/A  
**Horizontal Repeat:** N/A  
**Fire Code:** Class A, ASTM E-84

**TAK-AA01-02  
SPECIFICATIONS**

**Content:** Brass  
**Backing:** Paper  
**Width (approx):** 92 cm. (36.2 in.)  
**Roll Size (approx):** 7.4 m. (8.1 yd.)  
**Sold by the Roll**  
**Minimum Order Quantity:** 1 Roll  
**Installation:** Approximate Match  
**Vertical Repeat:** N/A  
**Horizontal Repeat:** N/A  
**Fire Code:** Class A, ASTM E-84

*Due to the handcrafted nature of this material, there may be a slight variance in design and color. This is part of the inherent beauty of natural wallcoverings.*





# EXQUISITE FOILS



TAK-AA02-01



TAK-AA02-02



TAK-AA02-03





TAKUMI

**TAK-AA02-01  
SPECIFICATIONS**

**Content:** Aluminum  
**Backing:** Paper  
**Width (approx):** 93 cm. (36.6 in.)  
**Roll Size (approx):** 7.4 m. (8.1 yd.)  
**Sold by the Roll**  
**Minimum Order Quantity:** 1 Roll  
**Installation:** Random Match  
**Vertical Repeat:** N/A  
**Horizontal Repeat:** N/A  
**Fire Code:** Class A, ASTM E-84

**TAK-AA02-02  
SPECIFICATIONS**

**Content:** Aluminum  
**Backing:** Paper  
**Width (approx):** 93 cm. (36.6 in.)  
**Roll Size (approx):** 7.4 m. (8.1 yd.)  
**Sold by the Roll**  
**Minimum Order Quantity:** 1 Roll  
**Installation:** Random Match  
**Vertical Repeat:** N/A  
**Horizontal Repeat:** N/A  
**Fire Code:** Class A, ASTM E-84

**TAK-AA02-03  
SPECIFICATIONS**

**Content:** Brass  
**Backing:** Paper  
**Width (approx):** 93 cm. (36.6 in.)  
**Roll Size (approx):** 7.4 m. (8.1 yd.)  
**Sold by the Roll**  
**Minimum Order Quantity:** 1 Roll  
**Installation:** Random Match  
**Vertical Repeat:** N/A  
**Horizontal Repeat:** N/A  
**Fire Code:** Class A, ASTM E-84

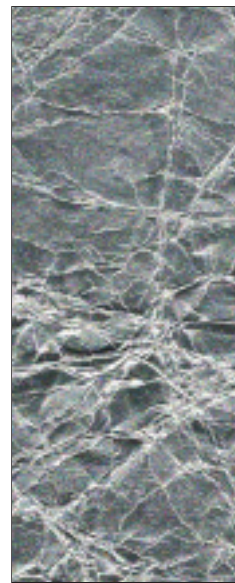
*Due to the handcrafted nature of this material, there may be a slight variance in design and color. This is part of the inherent beauty of natural wallcoverings.*



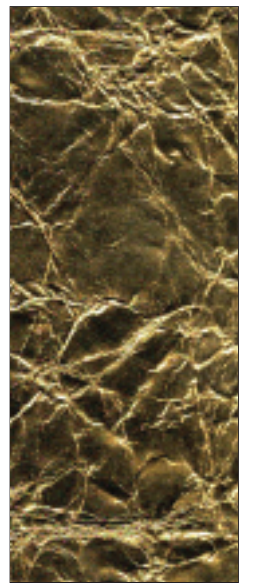




## EXQUISITE FOILS

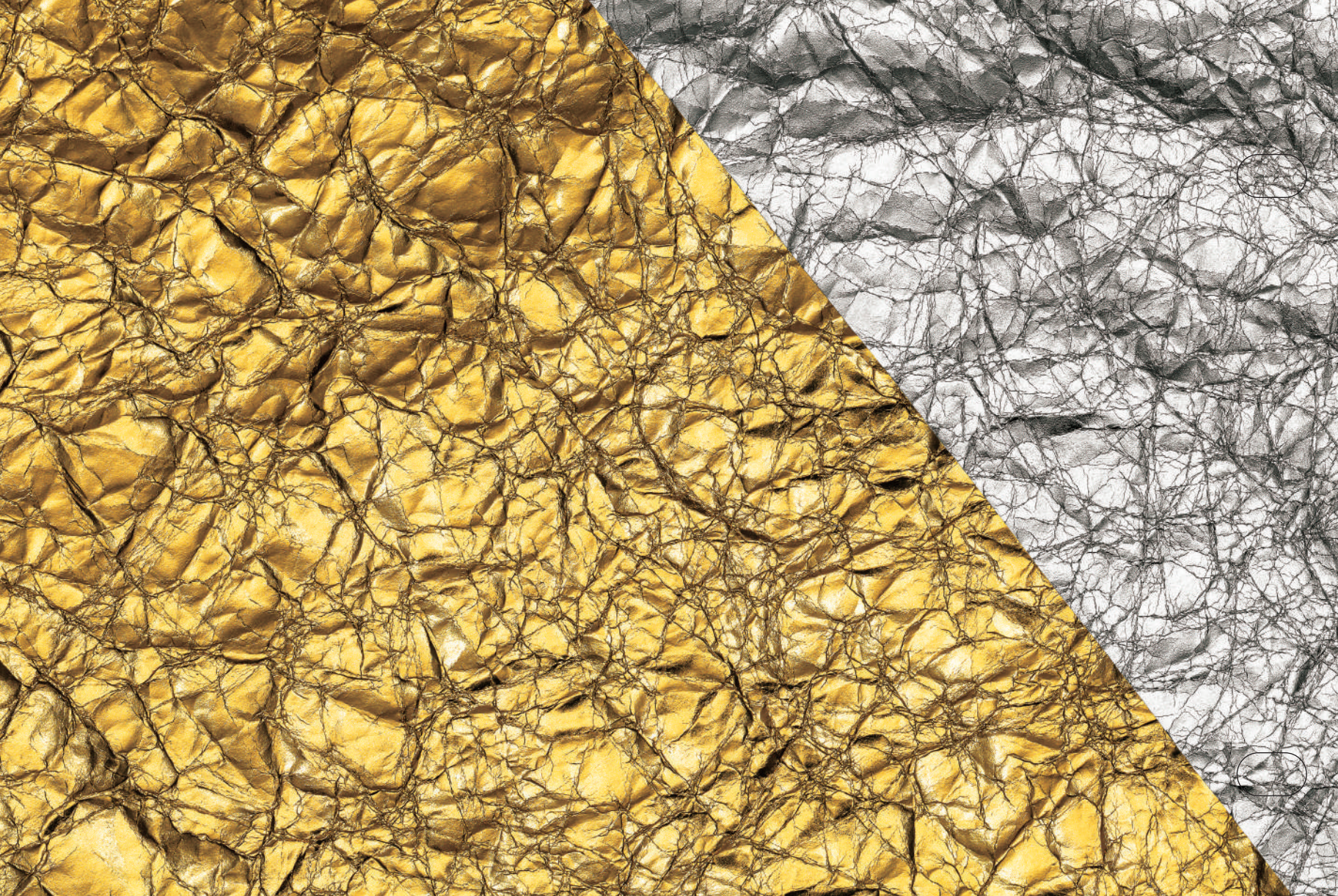


TAK-AA03-01



TAK-AA03-02





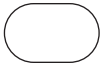
**TAK-AA03-01  
SPECIFICATIONS**

**Content:** Silver  
**Backing:** Paper  
**Width (approx):** 92 cm. (36.2 in.)  
**Roll Size (approx):** 7.4 m. (8.1 yd.)  
**Sold by the Roll**  
**Minimum Order Quantity:** 1 Roll  
**Installation:** Random Match  
**Vertical Repeat:** N/A  
**Horizontal Repeat:** N/A  
**Fire Code:** Class A, ASTM E-84

**TAK-AA03-02  
SPECIFICATIONS**

**Content:** Print on Silver  
**Backing:** Paper  
**Width (approx):** 92 cm. (36.2 in.)  
**Roll Size (approx):** 7.4 m. (8.1 yd.)  
**Sold by the Roll**  
**Minimum Order Quantity:** 1 Roll  
**Installation:** Random Match  
**Vertical Repeat:** N/A  
**Horizontal Repeat:** N/A  
**Fire Code:** Class A, ASTM E-84

*Due to the handcrafted nature of this material, there may be a slight variance in design and color. This is part of the inherent beauty of natural wallcoverings.*







## EXQUISITE FOILS



TAK-AA04-01



TAK-AA04-02



TAK-AA05-01





**TAK-AA04-01  
SPECIFICATIONS**

**Content:** Aluminum  
**Backing:** Paper  
**Width (approx):** 91 cm. (35.8 in.)  
**Roll Size (approx):** 50 m. (54.7 yd.)  
**Sold by the Linear Meter**  
**Minimum Order Quantity:**  
15 m. at 1 m. increments  
**Installation:** Approximate Match  
**Vertical Repeat:** 91 cm. (35.8 in.)  
**Horizontal Repeat:** 91 cm. (35.8 in.)  
**Fire Code:** Class A, ASTM E-84

**TAK-AA04-02  
SPECIFICATIONS**

**Content:** Aluminum  
**Backing:** Paper  
**Width (approx):** 91 cm. (35.8 in.)  
**Roll Size (approx):** 50 m. (54.7 yd.)  
**Sold by the Linear Meter**  
**Minimum Order Quantity:**  
15 m. at 1 m. increments  
**Installation:** Approximate Match  
**Vertical Repeat:** 91 cm. (35.8 in.)  
**Horizontal Repeat:** 91 cm. (35.8 in.)  
**Fire Code:** Class A, ASTM E-84

**TAK-AA05-01  
SPECIFICATIONS**

**Content:** Pulp  
**Backing:** Paper  
**Width (approx):** 91.5 cm. (36 in.)  
**Roll Size (approx):** 50 m. (54.7 yd.)  
**Sold by the Linear Meter**  
**Minimum Order Quantity:**  
15 m. at 1 m. increments  
**Installation:** Approximate Match  
**Vertical Repeat:** 62.5 cm. (24.6 in.)  
**Horizontal Repeat:** 91.5 cm. (36 in.)  
**Fire Code:** Class A, ASTM E-84

*Due to the handcrafted nature of this material, there may be a slight variance in design and color. This is part of the inherent beauty of natural wallcoverings.*





# EXQUISITE FOILS



TAK-AA06-01



TAK-AA06-02



TAK-AA06-03





TAKUMI

**TAK-AA06-01  
SPECIFICATIONS**

**Content:** Brass  
**Backing:** Paper  
**Width (approx):** 92 cm. (36.2 in.)  
**Roll Size (approx):** 7.4 m. (8.1 yd.)  
**Sold by the Roll**  
**Minimum Order Quantity:** 1 Roll  
**Installation:** Approximate Match  
**Vertical Repeat:** N/A  
**Horizontal Repeat:** N/A  
**Fire Code:** Class A, ASTM E-84

**TAK-AA06-02  
SPECIFICATIONS**

**Content:** Aluminum  
**Backing:** Paper  
**Width (approx):** 92 cm. (36.2 in.)  
**Roll Size (approx):** 7.4 m. (8.1 yd.)  
**Sold by the Roll**  
**Minimum Order Quantity:** 1 Roll  
**Installation:** Approximate Match  
**Vertical Repeat:** N/A  
**Horizontal Repeat:** N/A  
**Fire Code:** Class A, ASTM E-84

**TAK-AA06-03  
SPECIFICATIONS**

**Content:** Tin  
**Backing:** Paper  
**Width (approx):** 92 cm. (36.2 in.)  
**Roll Size (approx):** 7.4 m. (8.1 yd.)  
**Sold by the Roll**  
**Minimum Order Quantity:** 1 Roll  
**Installation:** Approximate Match  
**Vertical Repeat:** N/A  
**Horizontal Repeat:** N/A  
**Fire Code:** Class A, ASTM E-84

*Due to the handcrafted nature of this material, there may be a slight variance in design and color. This is part of the inherent beauty of natural wallcoverings.*





## EXQUISITE FOILS



TAK-AA07-01



TAK-AA07-02





## SPECIFICATIONS

**Content:** Print on Aluminum

**Backing:** Paper

**Width (approx):** 92 cm. (36.2 in.)

**Roll Size (approx):** 50 m. (54.7 yd.)

**Sold by the Linear Meter**

**Minimum Order Quantity:** 15 m. at 1 m. increments

**Installation:** Approximate Match

**Vertical Repeat:** 64 cm. (25.2 in.)

**Horizontal Repeat:** 92 cm. (36.2 in.)

**Fire Code:** Class A, ASTM E-84

**[ T ]**  
TAKUMI

*Due to the handcrafted nature of this material, there may be a slight variance in design and color. This is part of the inherent beauty of natural wallcoverings.*

sangetsu | goodrich

[www.goodrichglobal.com](http://www.goodrichglobal.com)  
[info@goodrichglobal.com](mailto:info@goodrichglobal.com)





## EXQUISITE FOILS



TAK-AA08-01



TAK-AA08-02





## SPECIFICATIONS

**Content:** Print on Aluminum

**Backing:** Paper

**Width (approx):** 92 cm. (36.2 in.)

**Roll Size (approx):** 50 m. (54.7 yd.)

**Sold by the Linear Meter**

**Minimum Order Quantity:** 15 m. at 1 m. increments

**Installation:** Approximate Match

**Vertical Repeat:** 64.1 cm. (25.2 in.)

**Horizontal Repeat:** 92 cm. (36.2 in.)

**Fire Code:** Class A, ASTM E-84

*Due to the handcrafted nature of this material, there may be a slight variance in design and color. This is part of the inherent beauty of natural wallcoverings.*





## EXQUISITE FOILS



TAK-AA09-01



TAK-AA09-02



**TAK-AA09-01  
SPECIFICATIONS**

**Content:** Aluminum

**Backing:** Paper

**Width (approx):** 92 cm. (36.2 in.)

**Roll Size (approx):** 7.4 m. (8.1 yd.)

**Sold by the Roll**

**Minimum Order Quantity:** 1 Roll

**Installation:** Random Match

**Vertical Repeat:** N/A

**Horizontal Repeat:** N/A

**Fire Code:** Class A, ASTM E-84

**TAK-AA09-02  
SPECIFICATIONS**

**Content:** Brass

**Backing:** Paper

**Width (approx):** 92 cm. (36.2 in.)

**Roll Size (approx):** 7.4 m. (8.1 yd.)

**Sold by the Roll**

**Minimum Order Quantity:** 1 Roll

**Installation:** Random Match

**Vertical Repeat:** N/A

**Horizontal Repeat:** N/A

**Fire Code:** Class A, ASTM E-84



*Due to the handcrafted nature of this material, there may be a slight variance in design and color. This is part of the inherent beauty of natural wallcoverings.*





# WASHI PAPER STORY

The word washi comes from “Wa” meaning Japanese and “Shi” meaning paper. Washi Paper is a traditional Japanese paper made from plant fiber and relies heavily on manual methods of production. It involves a long and intricate process that is often undertaken in the cold weather of winter, as pure, cold running water is essential to the creation of washi.

The Kozo tree bark is steamed, washed, peeled, and boiled further to remove impurities and soften it by beating. It is then moved to the final step in water along with a sticky plant component called Neri. Traditional methods and clean water are important in the production of washi.

For centuries, colorful designs applied by woodblock have been made for decorative use, including hand-painted effects. Washi is traditionally used in screens, lamps, and blinds, taking advantage of its translucency. As a craft, washi is considered to be part of Japan’s cultural heritage dating back 1,400 years. The washi papers featured in Takumi are hand painted with the delicate touch of an artist’s brush to create a unique look for the wall.

*Unfold the traditions and beauty.*

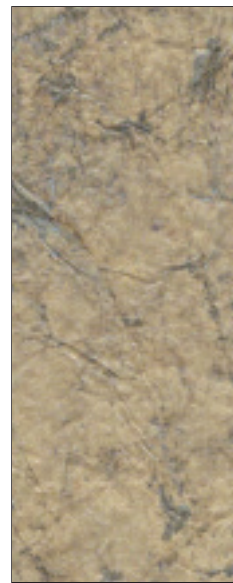








## ARTIST'S BRUSH

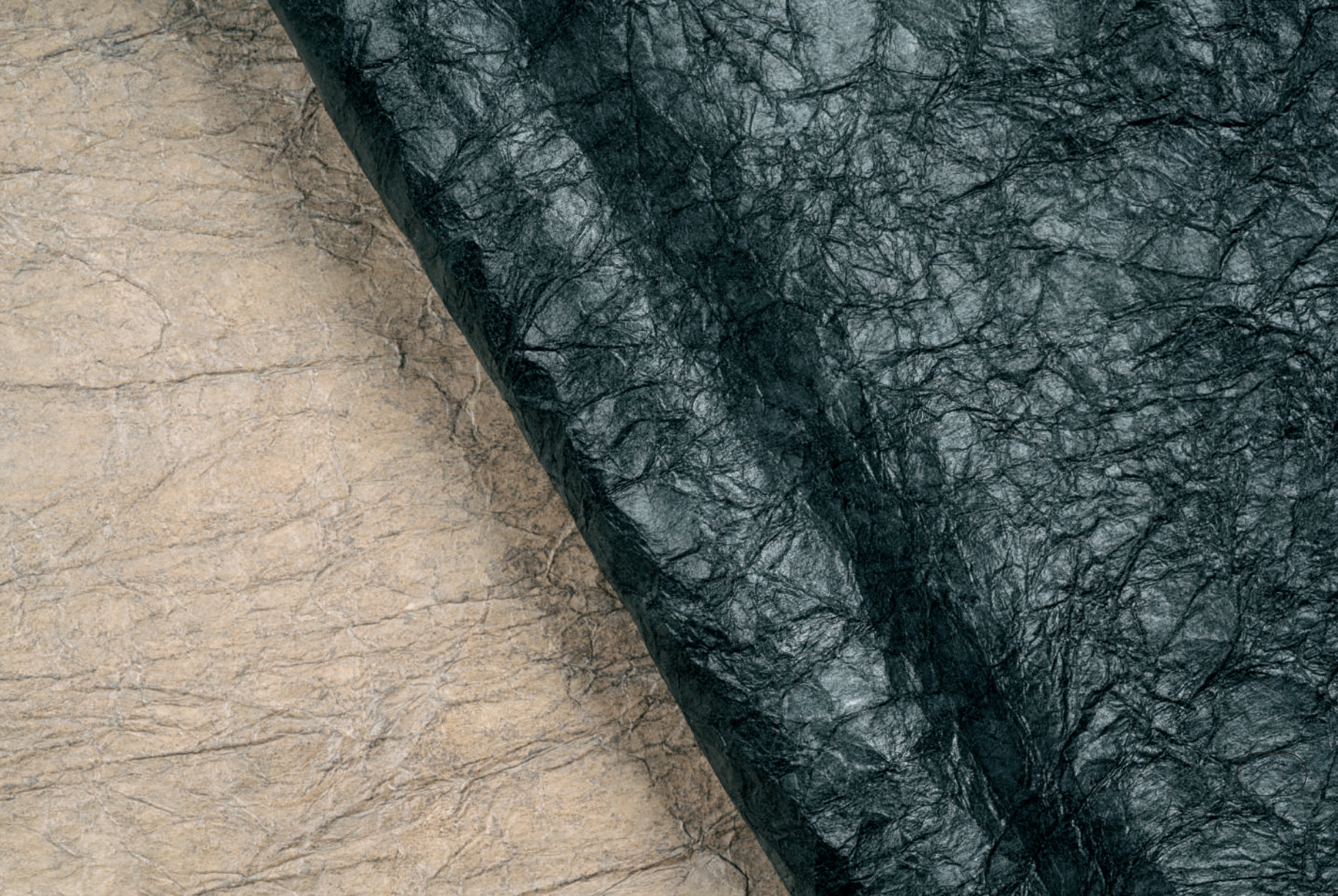


TAK-BA01-01



TAK-BA01-02





**SPECIFICATIONS**

**Content:** Paper

**Backing:** N/A

**Width (approx):** 95 cm. (37.4 in.)

**Roll Size (approx):** 3 m. (3.3 yd.)

**Sold by the Roll**

**Minimum Order Quantity:** 1 Roll

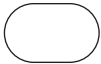
**Installation:** Random Match

**Vertical Repeat:** N/A

**Horizontal Repeat:** N/A

**Fire Code:** Class A, ASTM E-84

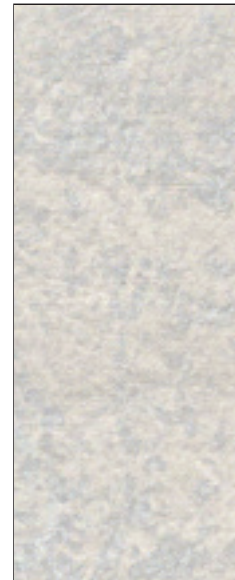
*Due to the handcrafted nature of this material, there may be a slight variance in design and color. This is part of the inherent beauty of natural wallcoverings.*







# ARTIST'S BRUSH



TAK-BB01-01



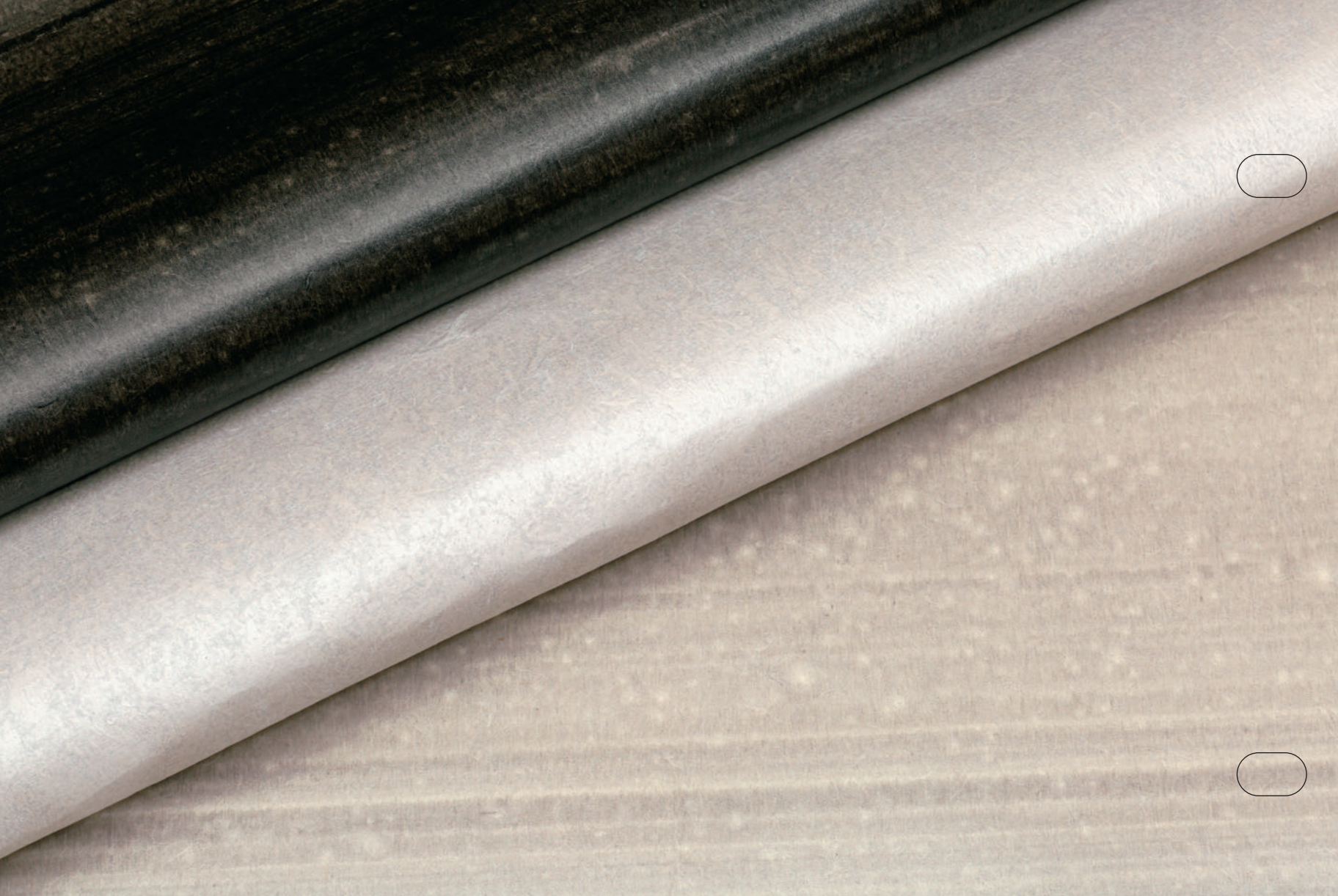
TAK-BB02-01



TAK-BB02-02







## SPECIFICATIONS

**Content:** Paper

**Backing:** N/A

**Width (approx):** 92 cm. (36.2 in.)

**Roll Size (approx):** 3 m. (3.3 yd.)

**Sold by the Roll**

**Minimum Order Quantity:** 1 Roll

**Installation:** Random Match

**Vertical Repeat:** N/A

**Horizontal Repeat:** N/A

**Fire Code:** Class A, ASTM E-84

**[ T ]**  
TAKUMI

*Due to the handcrafted nature of this material, there may be a slight variance in design and color. This is part of the inherent beauty of natural wallcoverings.*

sangetsu | goodrich

[www.goodrichglobal.com](http://www.goodrichglobal.com)  
[info@goodrichglobal.com](mailto:info@goodrichglobal.com)





**TAKUMI**<sup>™</sup>  
Artisan Crafted Wallcoverings



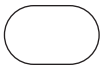
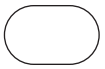
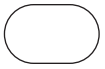


SPECIFICATIONS

- Content: Mulberry
- Backing: Non-Woven
- Width (approx): 91.4 cm. (36 in.)
- Roll Size (approx): 15 m. (16.4 yd.)
- Sold by the Roll
- Minimum Order Quantity: 1 Roll
- Installation: Random Match
- Vertical Repeat: N/A
- Horizontal Repeat: N/A
- Fire Code: Class A, ASTM E-84

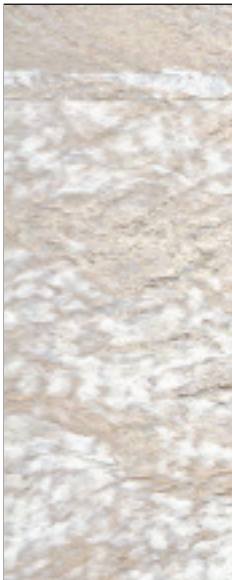
*Due to the handcrafted nature of this material, there may be a slight variance in design and color. This is part of the inherent beauty of natural wallcoverings.*







# OPULENT CORKS



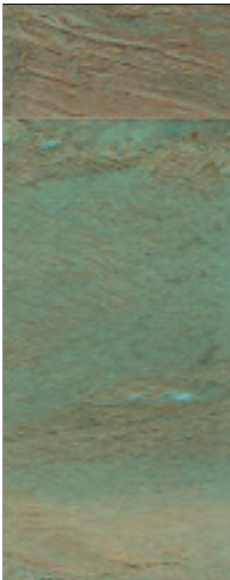
TAK-CA01-01



TAK-CA01-02



TAK-CA01-03



TAK-CA01-04



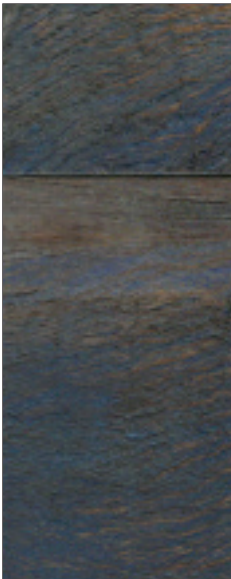
TAK-CA01-05



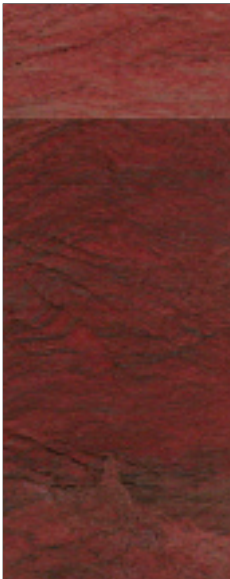
TAK-CA01-06



TAK-CA01-07



TAK-CA01-08



TAK-CA01-09



TAK-CA01-10





# OPULENT CORKS



TAK-CA02-01



TAK-CA03-01



TAK-CA04-01





## SPECIFICATIONS

**Content:** Cork

**Backing:** Paper

**Width (approx):** 91.5 cm. (36 in.)

**Roll Size (approx):** 7.3 m. (8 yd.)

**Sold by the Roll**

**Minimum Order Quantity:** 1 Roll

**Installation:** Random Match

**Vertical Repeat:** N/A

**Horizontal Repeat:** N/A

**Fire Code:** Class A, ASTM E-84

**[ T ]**  
TAKUMI

*Due to the handcrafted nature of this material, there may be a slight variance in design and color. This is part of the inherent beauty of natural wallcoverings.*

sangetsu | goodrich

[www.goodrichglobal.com](http://www.goodrichglobal.com)  
[info@goodrichglobal.com](mailto:info@goodrichglobal.com)





## OPULENT CORKS



TAK-CA05-01



TAK-CA05-02





## SPECIFICATIONS

**Content:** Cork

**Backing:** Paper

**Width (approx):** 90 cm. (35.4 in.)

**Roll Size (approx):** 30 m. (32.8 yd.)

**Sold by the Linear Meter**

**Minimum Order Quantity:** 15 m. at 1 m. increments

**Installation:** Random Match

**Vertical Repeat:** N/A

**Horizontal Repeat:** N/A

**Fire Code:** Class A, ASTM E-84

**[ T ]**  
TAKUMI

*Due to the handcrafted nature of this material, there may be a slight variance in design and color. This is part of the inherent beauty of natural wallcoverings.*

sangetsu | goodrich

[www.goodrichglobal.com](http://www.goodrichglobal.com)  
[info@goodrichglobal.com](mailto:info@goodrichglobal.com)





# PRECIOUS MINERALS



TAK-DA01-01



TAK-DA01-02



TAK-DA01-03





## SPECIFICATIONS

**Content:** Pulp & Mica Chips

**Backing:** Paper

**Width (approx):** 92 cm. (36.2 in.)

**Roll Size (approx):** 50 m. (54.7 yd.)

**Sold by the Linear Meter**

**Minimum Order Quantity:** 15 m. at 1 m. increments

**Installation:** Random Match

**Vertical Repeat:** N/A

**Horizontal Repeat:** N/A

**Fire Code:** Class A, ASTM E-84

**[ T ]**  
TAKUMI

*Due to the handcrafted nature of this material, there may be a slight variance in design and color. This is part of the inherent beauty of natural wallcoverings.*

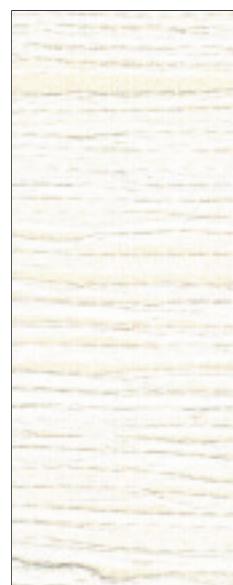
sangetsu | goodrich

[www.goodrichglobal.com](http://www.goodrichglobal.com)  
[info@goodrichglobal.com](mailto:info@goodrichglobal.com)

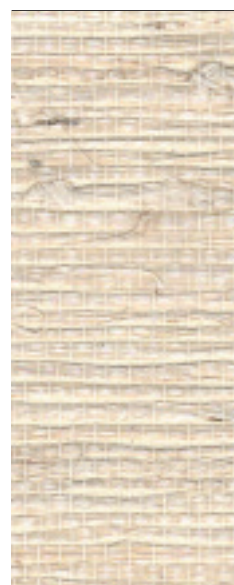




## REFINED GRASSCLOTHS



TAK-FA01-01



TAK-FA01-02





## SPECIFICATIONS

**Content:** Arrowroot

**Backing:** Non-Woven

**Width (approx):** 91.4 cm. (36 in.)

**Roll Size (approx):** 15 m. (16.4 yd.)

**Sold by the Roll**

**Minimum Order Quantity:** 1 Roll

**Installation:** Random Match

**Vertical Repeat:** N/A

**Horizontal Repeat:** N/A

**Fire Code:** Class A, ASTM E-84

**[ T ]**  
TAKUMI

*Due to the handcrafted nature of this material, there may be a slight variance in design and color. This is part of the inherent beauty of natural wallcoverings.*

sangetsu | goodrich

[www.goodrichglobal.com](http://www.goodrichglobal.com)  
[info@goodrichglobal.com](mailto:info@goodrichglobal.com)





# A WEAVER'S STORY

Since the 1930s, the Japanese textile industry has been manufacturing woven Fusuma paper made from natural materials such as cotton and hemp. Soon after, they began to weave thin textiles made of rayon yarn that was newly developed from wood pulp. These products were laminated to paper and sold as wallcovering.

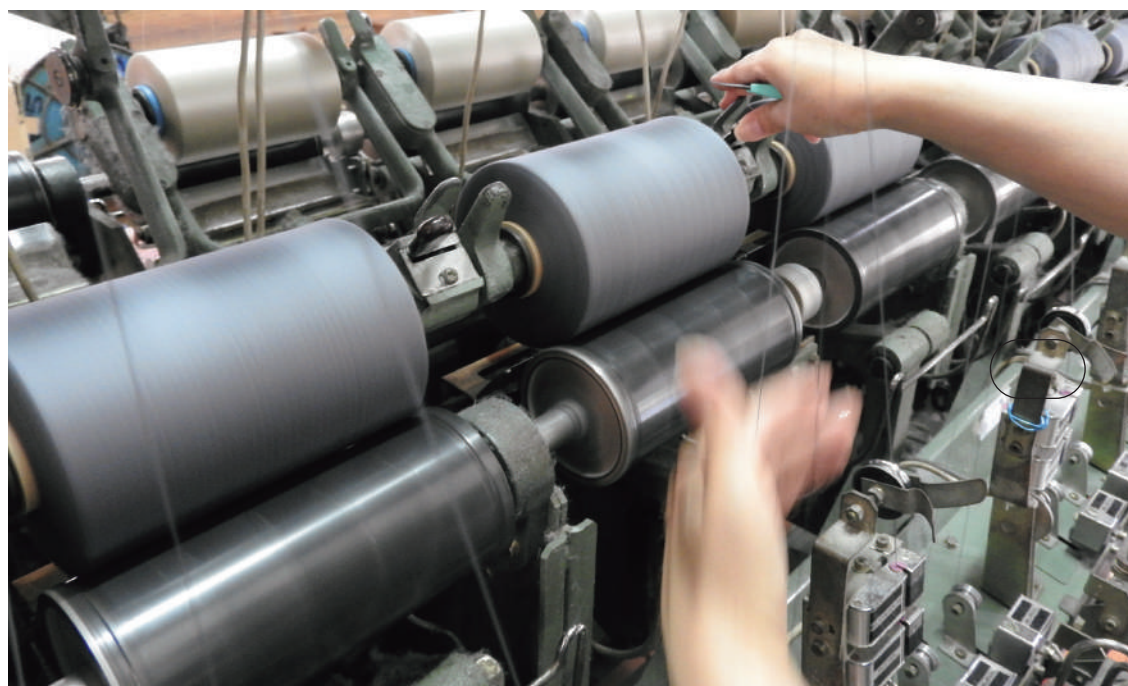
Woven wallpaper ranges from traditional fabric materials such as cotton, silk, and rayon to woven natural fibers as rare as paperweave and linen. All are characterized by the unique texture of each raw yarn, the three-dimensional texture created by the warp and weave of the surface, and the texture and persuasiveness of the real thing.

A woven fabric is made by spinning together thousands of threads, twisted and dyed in different colors, lengthwise and crosswise. The rich creativity and traditional skills of artisans, who are well-versed in the characteristics of the material, are evident in the woven wallpapers and the coloration and layering of the finished product.

Our woven wallpapers fuse tradition with new technology and will contribute to society by conveying the rich culture of Japan to the world and enriching people's lives.

*Weave history into your design.*













## SPECIFICATIONS

**Content:** Linen

**Backing:** Paper

**Width (approx):** 92 cm. (36.2 in.)

**Roll Size (approx):** 50 m. (54.7 yd.)

**Sold by the Linear Meter**

**Minimum Order Quantity:** 15 m. at 1 m. increments

**Installation:** Random Match

**Vertical Repeat:** N/A

**Horizontal Repeat:** N/A

**Fire Code:** Class A, ASTM E-84

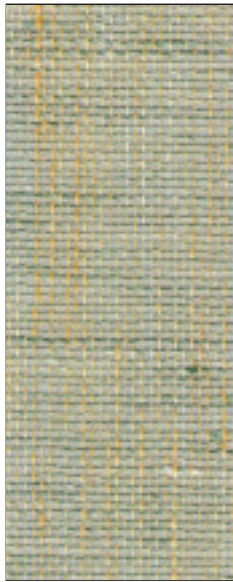
*Due to the handcrafted nature of this material, there may be a slight variance in design and color. This is part of the inherent beauty of natural wallcoverings.*



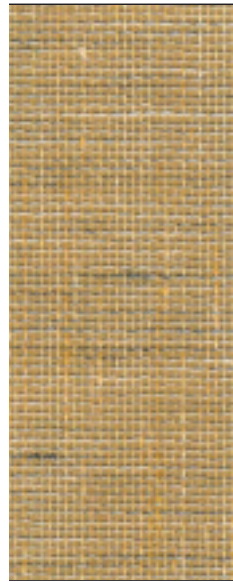




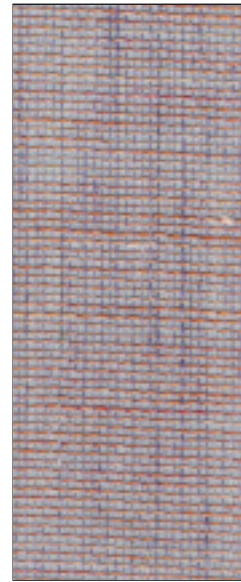
# INTRICATE WEAVES



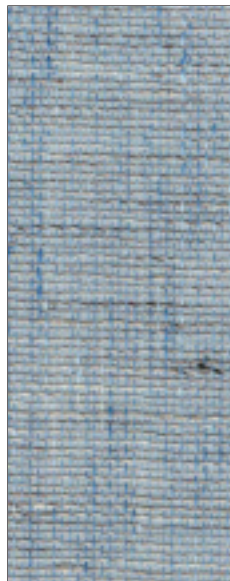
TAK-EA01-01



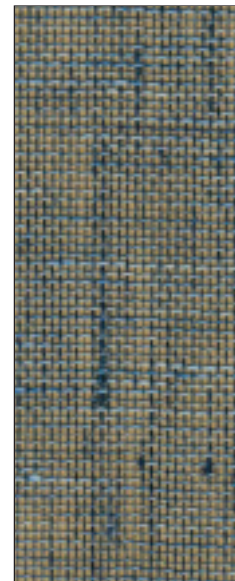
TAK-EA01-02



TAK-EA01-03



TAK-EA01-04

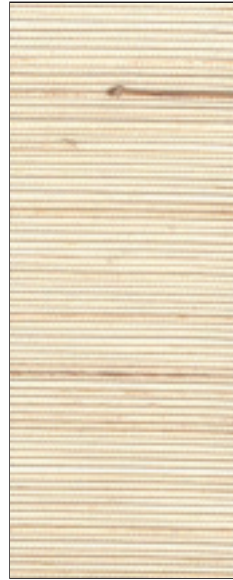


TAK-EA01-05





## INTRICATE WEAVES



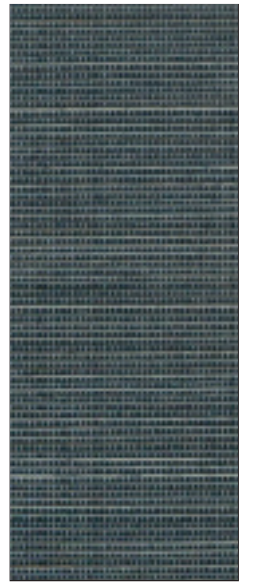
TAK-EA02-01



TAK-EA02-02



TAK-EA02-03



TAK-EA02-04





## SPECIFICATIONS

**Content:** Abaca

**Backing:** Non-Woven

**Width (approx):** 91.4 cm. (36 in.)

**Roll Size (approx):** 15 m. (16.4 yd.)

**Sold by the Roll**

**Minimum Order Quantity:** 1 Roll

**Installation:** Random Match

**Vertical Repeat:** N/A

**Horizontal Repeat:** N/A

**Fire Code:** Class A, ASTM E-84

**[ T ]**  
TAKUMI

*Due to the handcrafted nature of this material, there may be a slight variance in design and color. This is part of the inherent beauty of natural wallcoverings.*

sangetsu | goodrich

[www.goodrichglobal.com](http://www.goodrichglobal.com)  
[info@goodrichglobal.com](mailto:info@goodrichglobal.com)

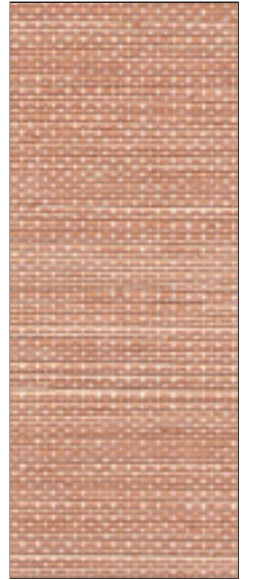




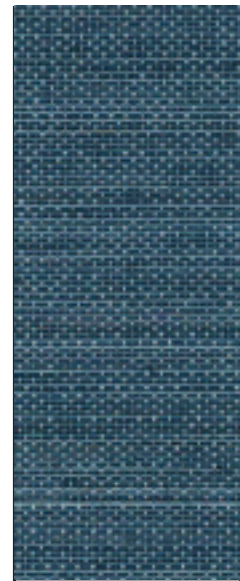
## INTRICATE WEAVES



TAK-EA03-01



TAK-EA03-02



TAK-EA03-03





## SPECIFICATIONS

**Content:** Abaca

**Backing:** Non-Woven

**Width (approx):** 91.4 cm. (36 in.)

**Roll Size (approx):** 15 m. (16.4 yd.)

**Sold by the Roll**

**Minimum Order Quantity:** 1 Roll

**Installation:** Random Match

**Vertical Repeat:** N/A

**Horizontal Repeat:** N/A

**Fire Code:** Class A, ASTM E-84

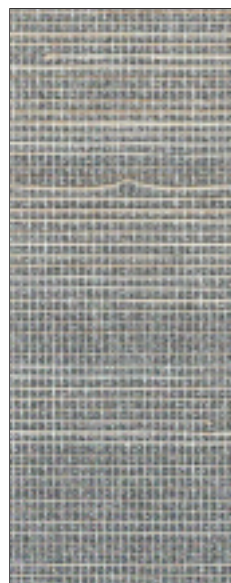


*Due to the handcrafted nature of this material, there may be a slight variance in design and color. This is part of the inherent beauty of natural wallcoverings.*





## INTRICATE WEAVES

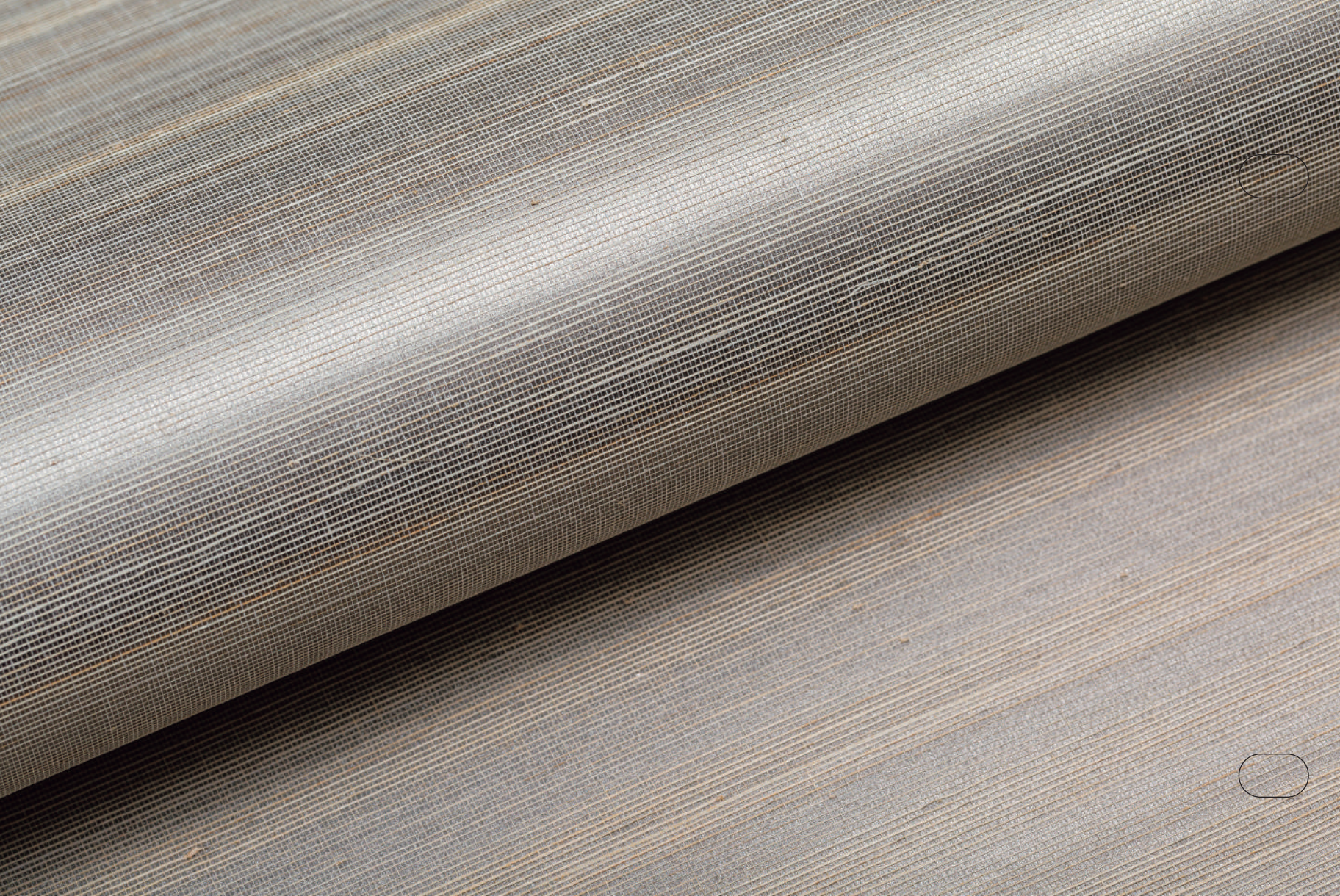


TAK-EA04-01



TAK-EA04-02





## SPECIFICATIONS

**Content:** Manila Hemp

**Backing:** Pulp Paper Covered with Aluminum Leaf

**Width (approx):** 92 cm. (36.2 in.)

**Roll Size (approx):** 50 m. (54.7 yd.)

**Sold by the Linear Meter**

**Minimum Order Quantity:** 15 m. at 1 m. increments

**Installation:** Random Match

**Vertical Repeat:** N/A

**Horizontal Repeat:** N/A

**Fire Code:** Class A, ASTM E-84

**[ T ]**  
TAKUMI

*Due to the handcrafted nature of this material, there may be a slight variance in design and color. This is part of the inherent beauty of natural wallcoverings.*

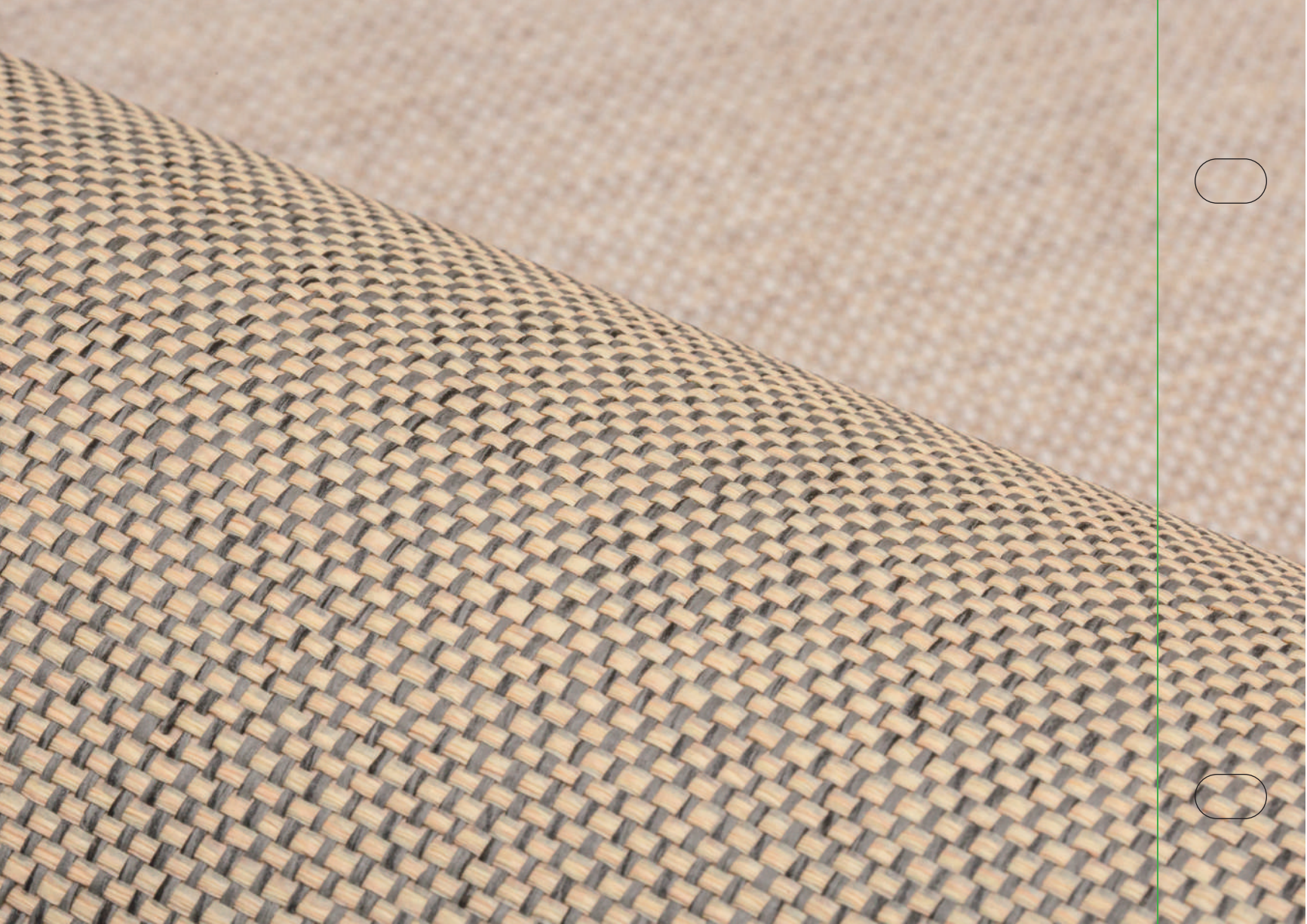
sangetsu | goodrich

[www.goodrichglobal.com](http://www.goodrichglobal.com)  
[info@goodrichglobal.com](mailto:info@goodrichglobal.com)









## SPECIFICATIONS

**Content:** Paperweave

**Backing:** Non-Woven

**Width (approx):** 91.4 cm. (36 in.)

**Roll Size (approx):** 15 m. (16.4 yd.)

**Sold by the Roll**

**Minimum Order Quantity:** 1 Roll

**Installation:** Random Match

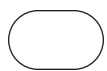
**Vertical Repeat:** N/A

**Horizontal Repeat:** N/A

**Fire Code:** Class A, ASTM E-84

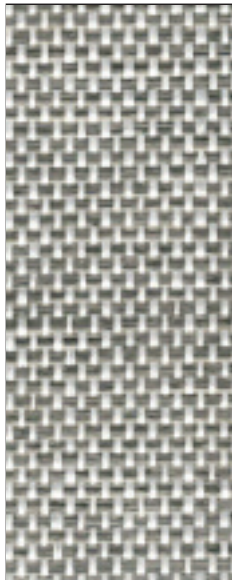
*Due to the handcrafted nature of this material, there may be a slight variance in design and color. This is part of the inherent beauty of natural wallcoverings.*



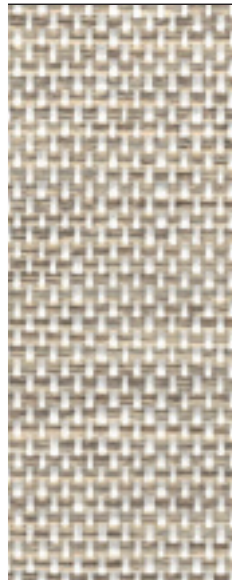




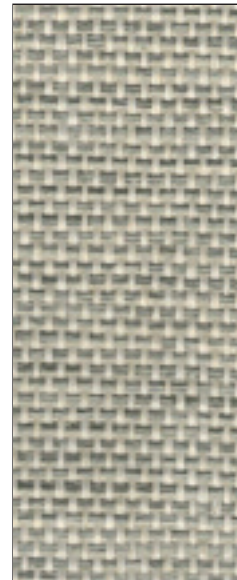
# INTRICATE WEAVES



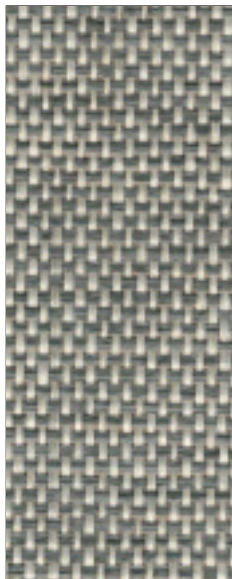
TAK-EC01-01



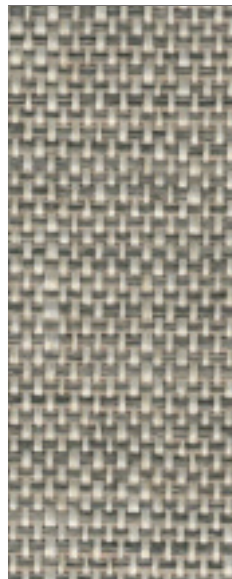
TAK-EC01-02



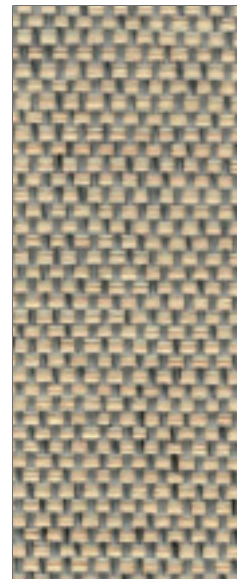
TAK-EC01-03



TAK-EC01-04



TAK-EC01-05

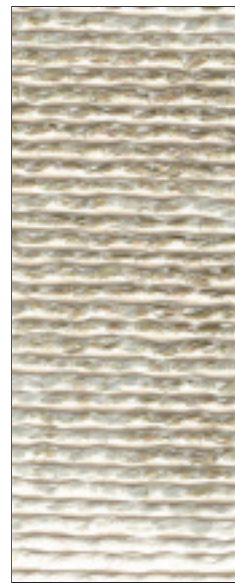


TAK-EC01-06

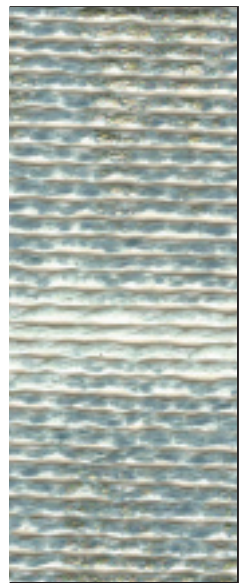




## INTRICATE WEAVES



TAK-EB01-01



TAK-EB01-02





## SPECIFICATIONS

**Content:** Twisted Paper Yarn with PE Yarn

**Backing:** Paper

**Width (approx):** 90 cm. (35.4 in.)

**Roll Size (approx):** 30 m. (32.8 yd.)

**Sold by the Linear Meter**

**Minimum Order Quantity:** 15 m. at 1 m. increments

**Installation:** Approximate Match

**Vertical Repeat:** 77 cm. (30.3 in.)

**Horizontal Repeat:** 90 cm. (35.4 in.)

**Fire Code:** Class A, ASTM E-84

**[ T ]**  
TAKUMI

*Due to the handcrafted nature of this material, there may be a slight variance in design and color. This is part of the inherent beauty of natural wallcoverings.*

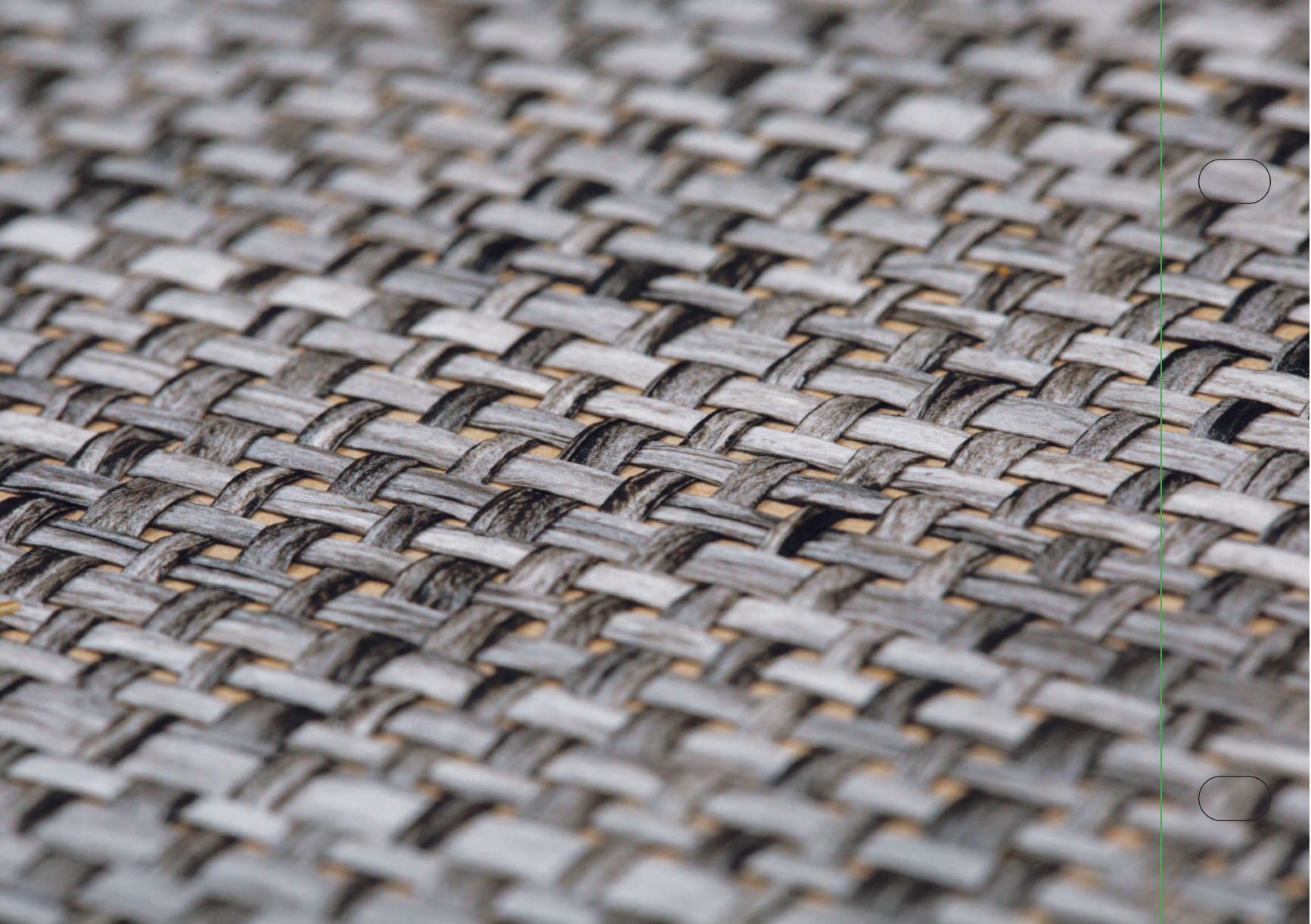
sangetsu | goodrich

[www.goodrichglobal.com](http://www.goodrichglobal.com)  
[info@goodrichglobal.com](mailto:info@goodrichglobal.com)









## SPECIFICATIONS

**Content:** Paperweave

**Backing:** Paper

**Width (approx):** 92 cm. (36.2 in.)

**Roll Size (approx):** 50 m. (54.7 yd.)

**Sold by the Linear Meter**

**Minimum Order Quantity:** 15 m. at 1 m. increments

**Installation:** Random Match

**Vertical Repeat:** N/A

**Horizontal Repeat:** N/A

**Fire Code:** Class A, ASTM E-84

*Due to the handcrafted nature of this material, there may be a slight variance in design and color. This is part of the inherent beauty of natural wallcoverings.*

**[T]**  
TAKUMI



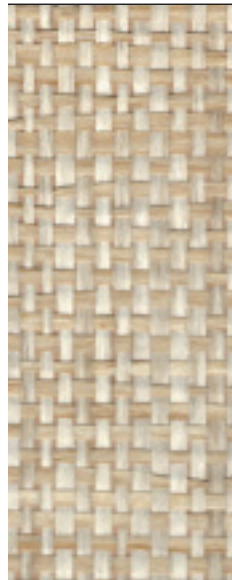




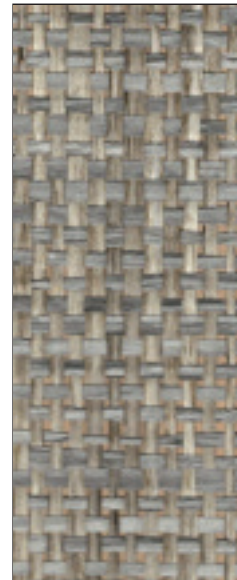
# INTRICATE WEAVES



TAK-ED01-01



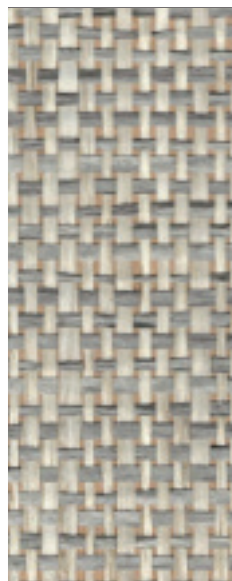
TAK-ED01-02



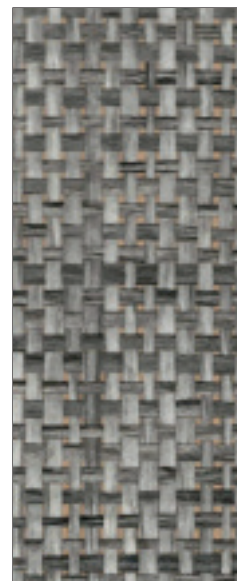
TAK-ED01-03



TAK-ED01-04



TAK-ED01-05



TAK-ED01-06









## SPECIFICATIONS

**Content:** Wood Veneer

**Backing:** Paper

**Width (approx):** 91.5 cm. (36 in.)

**Roll Size (approx):** 7.3 m. (8 yd.)

**Sold by the Roll**

**Minimum Order Quantity:** 1 Roll

**Installation:** Straight Match

**Vertical Repeat:** 26.4 cm. (10.4 in.)

**Horizontal Repeat:** 45.8 cm. (18 in.)

**Fire Code:** Class A, ASTM E-84

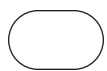
*Due to the handcrafted nature of this material, there may be a slight variance in design and color. This is part of the inherent beauty of natural wallcoverings.*

sangetsu | goodrich

[www.goodrichglobal.com](http://www.goodrichglobal.com)  
[info@goodrichglobal.com](mailto:info@goodrichglobal.com)

[ **T** ]  
TAKUMI



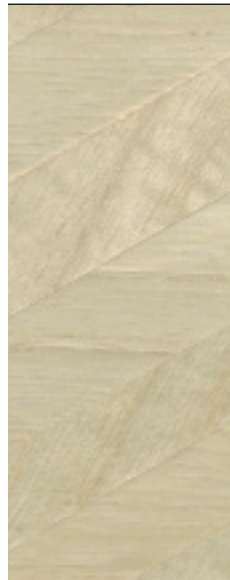




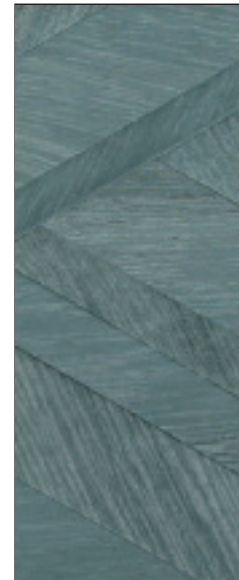
# ELEGANT WOODS



TAK-GA01-01



TAK-GA01-02



TAK-GA01-03



TAK-GA01-04



TAK-GA01-05



TAK-GA01-06





[www.goodrichglobal.com/Takumi](http://www.goodrichglobal.com/Takumi)